



cARTie's new office at 415 Howe Ave, Shelton CT.

cARTie Inaugurates New Home Base in Shelton

Shelton, February 2024 - Ribbon-Cutting at cARTie's New Office in the Conti Building at 415 Howe Avenue (Door 6), Shelton CT on Wednesday, March 6 4:30-6:30PM.

cARTie is proud to inaugurate its new home base and office space at the Conti Building in Shelton. cARTie's ribbon-cutting will include remarks from Bill Purcell, the President of the Greater Valley Chamber of Commerce, Shelton Mayor Mark Lauretti, and Clare Murray, cARTie's Co-Founder and Executive Director. Refreshments will be served, and an art-making station will be set up. The cARTie art museum bus will also make an appearance.

cARTie's First-Ever Ribbon-Cutting on Wednesday, March 6, 2024:

- 4:30-6:30PM at 415 Howe Ave (Door 6), Shelton CT
- Ceremony at 5PM with Bill Purcell, President of the Greater Valley Chamber of Commerce, Shelton Mayor Mark Lauretti, and Clare Murray, cARTie's Co-Founder and Executive Director
- Refreshments served
- Art-making station and cARTie art museum bus appearance
- Email clare@cARTie.org to confirm attendance



Color-coded art supplies in cARTie's new office at 415 Howe Ave, Shelton CT.

"We're thrilled to join the creative community at 415 Howe Ave and expand upon our roots in the Valley by inaugurating this new office space for cARTie. We look forward to celebrating this milestone with our community on March 6th!"

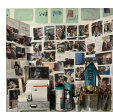
- Clare Murray, cARTie Co-Founder and Executive Director

Growing out of the novel idea of retrofitting a school bus and transforming it into a mobile art museum bus able to reach children and communities with limited access to the arts, cARTie has been steadily growing over the past four years. Now, after expanding operations from 7 school partners in 2021 to 27+ in 2024, cARTie is inaugurating its first-ever office space where educators will meet regularly for trainings, documentation workshops, material prep, and more. This move helps cARTie move forward in pursuit of its mission and vision ensuring all young children in Connecticut enjoy positive and prolonged early experiences with art museums and art museum-based learning.

The Conti Building is a remarkable space for cARTie to begin to call home. Filled with creatives and community-builders, the Conti Building is a great new base for Connecticut's nonprofit art museum bus on a mission to bridge inequities in education and arts access across the state.

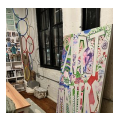
cARTie is CT's first and only nonprofit art museum bus committed to bridging inequities in education and arts access across the state through its mobile art museum bus with a focus on young children, emerging student-artists, and entire communities. To learn more about cARTie, please visit www.cartie.org and [@CTcARTie](https://www.instagram.com/CTcARTie) on social media.

Contact Information: Clare Murray, cARTie Co-Founder and Executive Director, clare@cARTie.org 203-505-0971



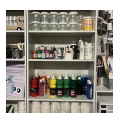
IMG_7306.jpg

[Download](#)



IMG_7309.jpg

[Download](#)



IMG_7305.jpg

[Download](#)